

# **2022 Student Population Projection - 2,001**

## ADLAI STEVENSON CONSTRUCTION PROJECT

November 5, 2012

### **12 Run Capacity - 2,208**



# NEW DESIGN OPTION

- 4 Runs K-6 (736 student capacity)
- Close Holiday Park Elementary
- District Elementary Configuration
  - Center - 3 Runs
  - Pivik - 4 Runs
  - Regency Park - 1 Run



# ESTIMATED COSTS

- **New Design**, OCIP, FF&E, Management, Moving & other Soft Costs - \$2,000,000
- Hard Cost - \$15,000,000
- Contingency - \$750,000
- Demolition and Asbestos Abatement Adlai - \$550,000
- Demolition and Asbestos Abatement HP - \$475,000
- **Total - \$18,775,000**
- Holiday Park Annual Savings - \$635,743
- Holiday Park 25 Year Amortized Savings - \$31,624,235

# OTHER CONSIDERATIONS

- Design - Dec 2012
- Bids - Aug 2013
- Occupancy - Dec 2014
- Adlai Student Relocation
  - Sept 2013 - Dec 2014 - Old Pivik
- Summer 2014 - Redistrict all Elementary Students



# SIMILAR TO **PIVIK** OPTION

- 4 Runs K-6 (736 student capacity)
- Close Holiday Park Elementary
- District Elementary Configuration
  - Center - 3 Runs
  - Pivik - 4 Runs
  - Regency Park - 1 Run



# ESTIMATED COSTS

- **Pivik Design**, OCIP, FF&E, Management, Moving & other Soft Costs - \$1,500,000
- Hard Cost - \$15,000,000
- Contingency - \$750,000
- Demolition and Asbestos Abatement Adlai - \$550,000
- Demolition and Asbestos Abatement HP - \$475,000
- **Total - \$18,275,000**
- Holiday Park Annual Savings - \$635,743
- Holiday Park 25 Year Amortized Savings - \$31,624,235

# OTHER CONSIDERATIONS

- Design Review - Dec 2012
- Bids - May 2013
  - Conservation, DEP, Planning Commission, etc... approvals
- Occupancy - Sept 2014
- Adlai Student Relocation
  - 2013-2014 school year - Old Pivik
- Summer 2014 - Redistrict all Elementary Students

# COST COMPARISON

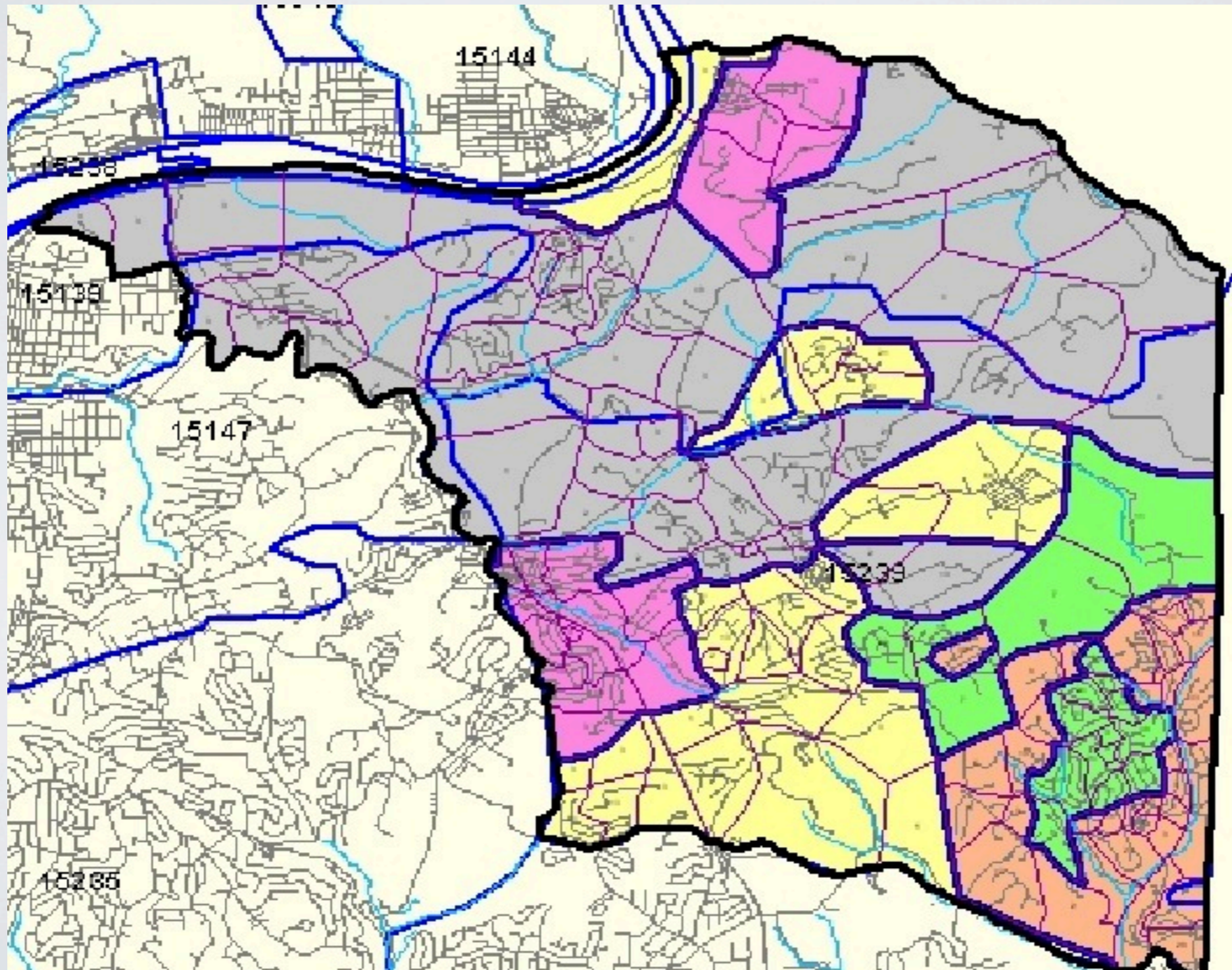
- New Design - **\$18,775,000**
- Similar to Pivik - **\$18,275,000**
- Available Funds - \$16,600,000



# MISC. INFORMATION & CONCERNS

- Bid Conditions
- Additional Financing/Bond Refinancing
  - May 2013 optimal time for new money
- Pivik Total Cost (as of 10/19/12) - \$17,551,171
  - Includes OCIP

# CURRENT ELEMENTARY SCHOOL ZONES



# CURRENT ELEMENTARY STUDENT RESIDENCES

